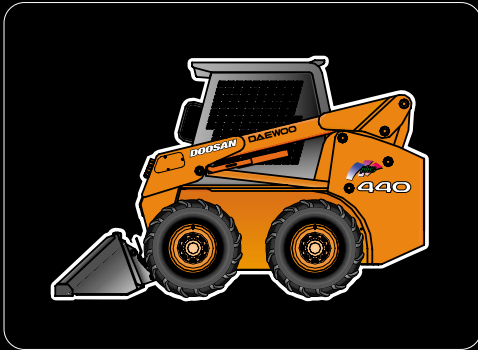


DOOSAN DAEWOO

Skid Steer Loader



440Plus

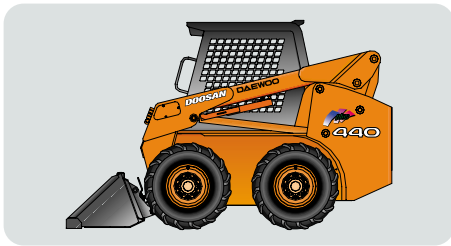


Distributed By:

Nationwide Equipment Company

11950 New Kings Road
Jacksonville, Florida USA 32219

Ph: (904) 924-2500 Email: sales@nwe-usa.com
www.NationwideEquipment.com



Main Features of 440Plus

- ✓ Vertical linkage boom provides great reach and higher dump
- ✓ Easy to see instrument and integral switch panel with room lamp.
- ✓ Great serviceability with tilting cab, wide open rear door, engine hood and swing-out oil cooler
- ✓ Clean pedal with inclined floor plate and cleaning holes.
- ✓ Easy entrance and exit with boom cross member.

SPECIFICATIONS

Model			440Plus	
● Operating Performance			● Dimensions	
Rated Operating Capacity	lb(kg)	1973(895)	A - Height at Maximum Extension	in(mm) 145.8(3704)
Operating Weight	lb(kg)	6133(2782)	B - Hinge Pin Height	in(mm) 114.8(2915)
Bucket Capacity	ft³(m³)	11.9(0.34)	C - R.O.P.S. Height	in(mm) 76.9(1954)
Breakout Force (Bucket)	lb(kg)	2910(1320)	D - Length with Bucket	in(mm) 126.3(3208)
Breakout Force (Boom)	lb(kg)	3285(1490)	E - Length without Bucket	in(mm) 99.3(2521)
Tipping Load	lb(kg)	3946(1790)	F - Width with Bucket	in(mm) 63.4(1611)
Speed, Forward	mph(kph)	7.3(11.8)	G - Track Width	in(mm) 58.5(1486)
Reverse	mph(kph)	7.3(11.8)	H - Wheelbase	in(mm) 42.3(1074.8)
Tires-Flotation		10-16.5 8PR	I - Seat Index Point	in(mm) 37.8(959)
Hydraulics Standard Flow	gpm(lpm)@bar	15.8(59.8)@207	J - Ground Clearance	in(mm) 7.5(190)
High Flow	gpm(lpm)@bar	27.5(104)@207	K - Dump Angle	deg 45°
● Engine			L - Dumping Height	in(mm) 87.6(2224)
Manufacturer		Cummins	M - Maximum Reach	in(mm) 25.4(645)
Model		A2300	N - Max. Rollback at Ground	deg 25°
Rated output	hp(ps)@rpm	47(48.0)@2600	O - Max. Rollback - Extended	deg 94°
Fuel / Tank Capacity	liter	Diesel / 54.0	Q - Clearance Circle w/o Bucket	in(mm) 51.3(1304)
Displacement	in³(cc)	139.8(2290)	R - Clearance Circle with Bucket	in(mm) 74.8(1901)
Cylinders		4	S - Clearance Circle - Rear	in(mm) 63.3(1607)
Torque	ft.lb(kg.m)@rpm	110.7(15.3)@1600	T - Width w/o Bucket	in(mm) 48.1(1222)
			U - Departure Angle	deg 26°

● Standard Engine

2.3 liter displacement,
Dual element air filter
Preheat system
Key fuel shut off
Spark arrestor muffler,
Lockable engine compartment

Hydraulic System

Gear type hydraulic pump, hydraulic motor
3 spool control valve
Auxiliary boom hydraulics

Electrical

Two Front and One Rear working lights

Operator's Area :

ROPS & FOPS operator cab
Operator safety restraint includes seat belt
pull down safety bar with arm rest
Rear cab window
Rear view mirror
Top cab window,
Adjustable foam seat
Light / Buzzer warning system

Drive Train

Piston type Hydrostatic transmission pump
Parking brake

Instrument Panel

Engine oil pressure
Engine water temperature
Voltage meter
Oil temperature indicator
Charge pressure indicator
Fuel gauge
Hour meter
Parking brake monitor
Preheater monitor
Key switch
Hydrostatic filter
Stop warning
Light switch

Quick Coupler

Ball fitting Type

● Optional Engine

Purifier (Catalytic)
Exhaust Muffler (12v)

Hydraulic System

High Hydraulic Flow
Hydraulic Self Leveling
Flat Face Fitting for Quick Coupler

Electrical

Back-Up Alarm
Horn for NON-EU
Combination Lamp - Front and Rear
Combination Lamp for use with High Flow Strobe Light

Operator's Area :

Hydraulic Joystick Controls
Hand Control System (mechanical type)
Hard Cab (Cabin)
Heater for Hard Cab
Side Mirrors
Reflector for NON-EU
area Tool Kit
CE Package

DIMENSIONAL DRAWINGS

